

TR FASTENINGS

TR Hank® Rivet Bushes



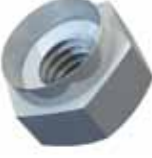






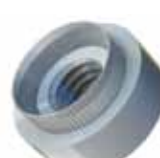

TR Fastenings is recognised throughout the industry for world-class products and services. We manufacture, stock and distribute a vast range of industrial fasteners and associated components.

SPECIFY • MANUFACTURE • DELIVER • INTERNATIONALLY

www.trfastenings.com

Edition 4

Contents

		Page			Page
	Hexagonal (HX)	2		Serrated Face Standoff (RF)	7
	Serrated Spigot (RH)	3		Serrated Face Mini Standoff (MF)	8
	Serrated Face (RH S/FACE)	4		Swage Nut (XX)	9
	Mini Sert (RM)	5		Euro Rivet Bush (ERB)	10
	Tank Bush (TA)	6			

Standard Wire Gauge Sizes - Applies to non-Euro rivet bush items

SWG	To cover sheet thickness (mm)
24	0.4 - 0.6
22	0.7 - 0.8
20	0.9 - 1.0
18	1.1 - 1.4
16	1.5 - 1.7
14	1.8 - 2.2
12	2.3 - 2.8
10	2.9 - 3.4
8	3.5 - 4.2
6	4.3 - 5.1
4	6

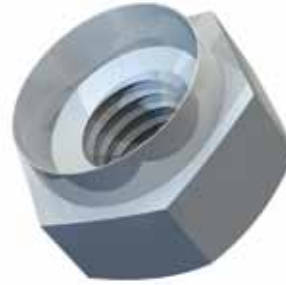
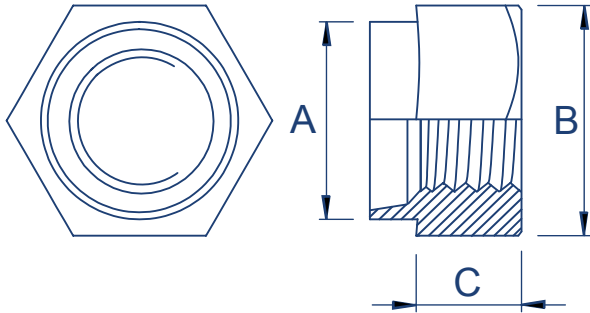
All data is correct to the best of our knowledge, however TR cannot be held responsible for any errors or omissions.

Price on application for any non-preferred sizes.

TR Hank® Rivet Bushes Hexagonal (HX)



Steel/Zinc & Clear (CR3) | Steel/Self Finish (SF) | Stainless Steel 303/Self Finish (SF)



Metric Dimensions

Thread form		M2.5	M3	M3.5	M4	M5	M6	M8	M10	M12
Diameter of spigot +0.00 -0.13mm	A	5.54	5.54	6.73	6.73	7.92	9.52	12.70	15.87	19.05
Width across flats ±0.15mm	B	7.92	7.92	7.92	7.92	9.52	11.10	14.27	19.05	22.22
Depth of body ±0.13mm	C	3.17	3.17	3.17	3.17	3.81	5.08	6.35	7.62	10.16
Recommended hole size +0.05 -0.00mm		5.54	5.54	6.73	6.73	7.92	9.52	12.70	15.87	19.05

Preferred Range

Thread (d)		M2.5	M3	M3.5	M4	M5	M6	M8	M10	M12
Gauge Size	6								ST	ST
	8							ST		
	10		ST A2		ST A2	ST A2	ST A2	ST A2	ST A2	ST
	12		ST A2		ST A2	ST A2	ST A2	ST A2	ST A2	ST
	14		ST A2		ST A2	ST A2	ST A2	ST A2	ST A2	ST A2
	16		ST A2	ST	ST A2	ST A2	ST A2	ST A2	ST A2	ST
	18	ST	ST A2	ST A2	ST A2	ST A2	ST A2	ST A2	ST	A2
	20		ST A2	ST	ST A2	ST A2	ST A2	ST A2	ST A2	ST

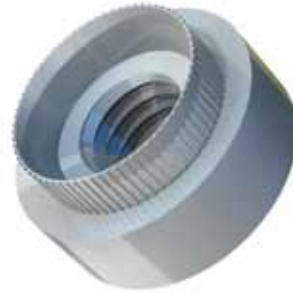
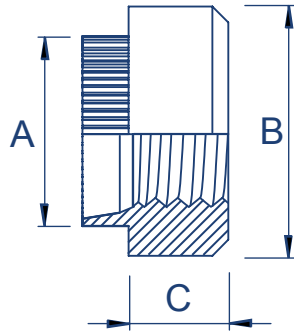
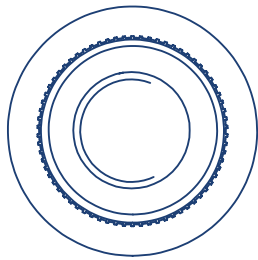
ST - Steel
A2 - 303 Stainless Steel

TR Hank® Rivet Bushes

Serrated Spigot (RH)



Steel/Zinc & Clear (CR3) | Steel/Self Finish (SF) | Stainless Steel 303/Self Finish (SF) | Aluminium/Self Finish (SF) | Brass/Self Finish (SF)



Metric Dimensions

Thread form		M2.5	M3	M3.5	M4	M5	M6	M8	M10	M12
Diameter of spigot +0.00 -0.13mm	A	5.54	5.54	6.73	6.73	7.92	9.52	12.70	15.87	19.05
Diameter across body ±0.15mm	B	7.92	7.92	9.52	9.52	11.10	12.70	15.87	19.05	25.40
Depth of body ±0.13mm	C	3.17	3.17	3.17	3.17	3.81	5.08	6.35	7.62	10.16
Recommended hole size +0.05 -0.00mm		5.54	5.54	6.73	6.73	7.92	9.52	12.70	15.87	19.05

Preferred Range

Thread (d)	M2.5	M3	M3.5	M4	M5	M6	M8	M10	M12	
Gauge Size	6					ST A2	ST A2			
	8				ST	ST	ST A2	ST A2		
	10	ST	ST A2 AL	ST	ST A2 AL BR	ST A2	ST A2 AL BR	ST A2 BR	ST A2	ST A2
	12		ST A2	ST	ST	ST A2 AL	ST A2 AL	ST A2	ST A2	ST
	14		ST A2 AL	ST	ST A2 AL BR	ST A2 AL	ST A2 AL	ST A2 BR	ST A2	ST
	16	ST	ST A2 AL	ST	ST A2 AL	ST A2	ST A2 AL	ST A2	ST A2	A2
	18	ST	ST A2 AL		ST A2 AL BR	ST A2 AL	ST A2 BR	ST A2	ST	ST A2
	20	ST	ST A2 AL		ST A2	ST A2 AL	ST A2	ST		

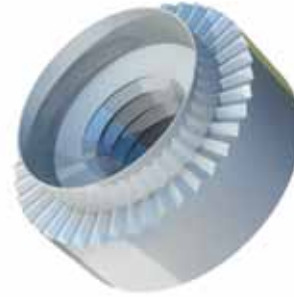
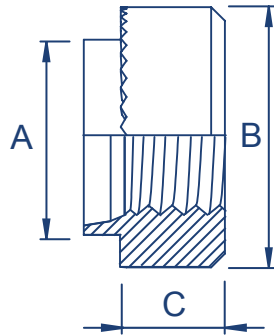
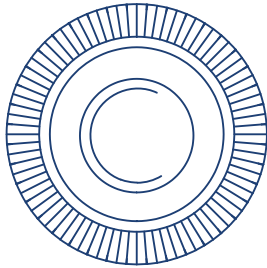
ST - Steel
 A2 - 303 Stainless Steel
 AL - Aluminium
 BR - Brass

TR Hank® Rivet Bushes

Serrated Face (RH S/FACE)



Steel/Zinc & Clear (CR3) | Steel/Self Finish (SF) | Stainless Steel 303/Self Finish (SF)



Metric Dimensions

Thread form		M2.5	M3	M3.5	M4	M5	M6	M8	M10	M12
Diameter of spigot +0.00 -0.13mm	A	5.54	5.54	6.73	6.73	7.92	9.52	12.70	15.87	19.05
Diameter across body ±0.15mm	B	7.92	7.92	9.52	9.52	11.10	12.70	15.87	19.05	25.40
Depth of body ±0.13mm	C	3.17	3.17	3.17	3.17	3.81	5.08	6.35	7.62	10.16
Recommended hole size +0.05 -0.00mm		5.54	5.54	6.73	6.73	7.92	9.52	12.70	15.87	19.05

Preferred Range

Thread (d)		M2.5	M3	M4	M5	M6	M8	M10	M12
Gauge Size	8							A2	
	10		ST	ST A2	ST A2	ST A2	ST A2	ST A2	ST
	12		ST A2	ST A2		ST A2	ST A2		ST A2
	14	A2	ST A2	ST A2	ST A2	ST A2	ST	ST	ST
	16		ST A2	ST A2	ST A2	ST A2	ST A2	ST A2	
	18		ST A2	ST A2	ST A2	ST A2	ST		ST A2
	20		ST A2	ST A2	ST A2	ST A2	ST		

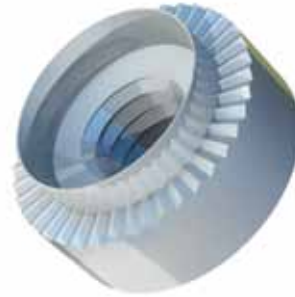
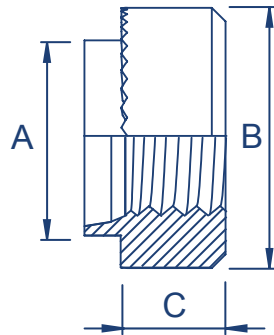
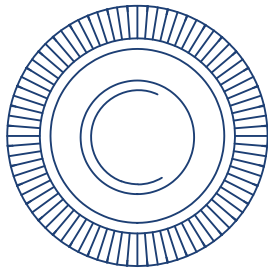
ST - Steel
A2 - 303 Stainless Steel

TR Hank® Rivet Bushes

Mini Sert (RM)



Steel/Zinc & Clear (CR3) | Steel/Self Finish (SF) | Stainless Steel 303/Self Finish (SF) | Aluminium/Self Finish (SF)



Metric Dimensions

Thread form		M2	M2.5	M3	M3.5	M4	M5	M6	M8	M10	M12
Diameter of spigot +0.00 -0.13mm	A	3.50	4.19	4.19	5.41	5.41	6.40	7.70	9.70	12.70	15.87
Diameter across body ±0.15mm	B	5.00	5.50	5.50	7.00	7.00	8.50	10.00	12.00	16.00	19.00
Depth of body ±0.13mm	C	2.30	2.80	2.80	3.20	3.20	3.80	5.10	6.50	7.60	7.60
Recommended hole size +0.05 -0.00mm		3.50	4.19	4.19	5.41	5.41	6.40	7.70	9.70	12.70	15.87

Preferred Range

Thread (d)	M2	M2.5	M3	M3.5	M4	M5	M6	M8	M10	M12
Sheet Thickness	0.6	ST	ST A2		ST					
	0.8		ST A2	ST A2		ST A2	ST			
	1.0	ST A2	ST A2	ST A2	ST	ST A2	ST A2	ST A2	ST	
	1.2	ST	ST A2	ST A2 AL	ST A2	ST A2	ST A2	ST A2	ST	
	1.6	ST	ST A2	ST A2	ST A2	ST A2	ST A2	ST A2	ST A2	ST
	2.0	ST	ST A2	ST A2		ST A2	ST A2	ST A2	ST A2	ST
	2.5		ST A2	ST A2		ST A2 AL	ST A2	ST A2	ST	
	3.0			ST A2		ST A2	ST A2	ST A2	ST	
	3.3		ST							
	3.6							ST		
4.9									ST	

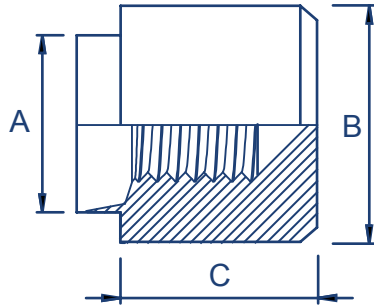
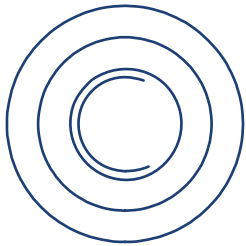
ST - Steel
A2 - 303 Stainless Steel
AL - Aluminium.

TR Hank® Rivet Bushes

Tank Bush (TA)



Steel/Zinc & Clear (CR3) | Steel/Self Finish (SF) | Stainless Steel 303/Self Finish (SF)



Metric Dimensions

Thread form		M3	M4	M5	M6	M8	M10	M12
Diameter of spigot +0.00 -0.13mm	A	5.54	6.73	7.92	9.52	12.70	15.87	19.05
Diameter across body ±0.15mm	B	7.92	9.52	11.10	12.70	15.87	19.05	25.40
Depth of body ±0.13mm	C	8.61	8.97	9.32	10.57	11.89	16.50	19.05
Recommended hole size +0.05 -0.00mm		5.54	6.73	7.92	9.52	12.70	15.87	19.05

Preferred Range

Thread (d)		M3	M4	M5	M6	M8	M10	M12
Gauge Size	10	A2	ST A2	ST A2	ST A2	ST A2	ST	
	12		ST A2	ST A2	A2	ST		
	14		ST A2	ST A2	ST A2	ST A2	ST A2	A2
	16	ST A2	ST A2	ST A2	ST A2	ST A2	A2	
	18	A2	ST A2	ST A2	ST A2	ST		
	20	ST	ST A2	ST A2	ST A2	A2	A2	

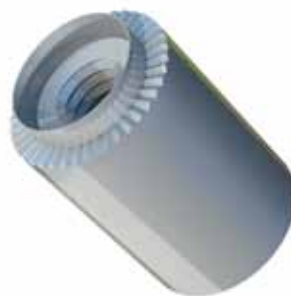
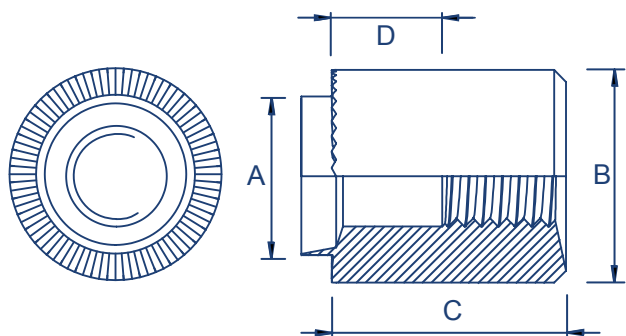
ST - Steel
A2 - 303 Stainless Steel

TR Hank® Rivet Bushes

Serrated Face Standoff (RF)



Steel/Zinc & Clear (CR3) | Steel/Self Finish (SF) | Stainless Steel 303/Self Finish (SF)



Metric Dimensions

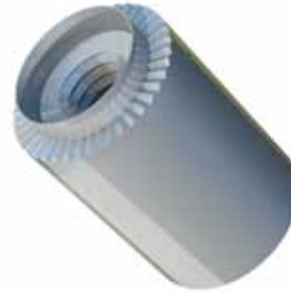
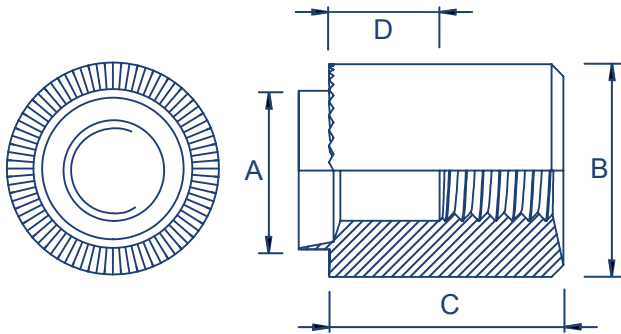
Thread form		M2.5	M3	M3.5	M4	M5	M6	M8	M10	M12
Diameter of spigot +0.00 -0.13mm	A	5.54	5.54	6.73	6.73	7.92	9.52	12.70	15.87	19.05
Diameter of body ±0.15mm	B	7.92	7.92	9.52	9.52	11.10	12.70	15.87	19.05	25.40
Recommended hole size +0.05 -0.00mm		5.54	5.54	6.73	6.73	7.92	9.52	12.70	15.87	19.05
Length of body ±0.13mm	C	4mm - 16mm								
Gauge Size		10swg - 20swg								
Length of body ±0.13mm	C	8-10mm		11-13mm		14-16mm		14-22mm		
Depth of c/bore	D	3.0mm Nom		6.0mm Nom		9.0mm Nom		12.0mm Nom		

TR Hank® Rivet Bushes

Serrated Face Mini Standoff (MF)



Steel/Zinc & Clear (CR3) | Steel/Self Finish (SF) | Stainless Steel 303/Self Finish (SF)



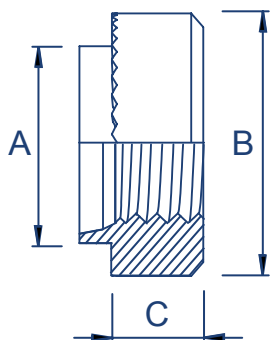
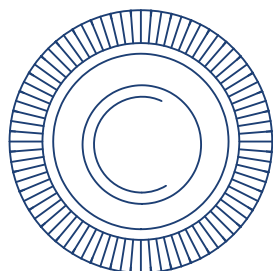
Metric Dimensions

Thread form		M2	M2.5	M3	M3.5	M4	M5	M6	M8	M10	M12
Diameter of spigot +0.00 -0.13mm	A	3.50	4.19	4.19	5.41	5.41	6.40	7.70	9.70	12.70	15.87
Diameter of body ±0.15mm	B	5.00	5.50	5.50	7.00	7.00	8.50	10.00	12.00	16.00	19.00
Recommended hole size +0.05 -0.00mm		3.50	4.19	4.19	5.41	5.41	6.40	7.70	9.70	12.70	15.87
Length of body ±0.13mm	C	3mm - 16mm									
Gauge Size		10swg - 20swg									
Length of body ±0.13mm	C	8-10mm			11-13mm		14-16mm		14-22mm		
Depth of c/bore	D	3.0mm Nom			6.0mm Nom		9.0mm Nom		12.0mm Nom		

TR Hank® Rivet Bushes Swage Nut (XX)



Steel/Zinc & Clear (CR3) | Steel/Self Finish (SF) | Stainless Steel 303/Self Finish (SF)



Metric Dimensions

Thread		M3	M4	M5	M6	M8
Diameter of spigot +0.00 -0.13mm	A	4.24	5.38	6.35	8.70	10.44
Body diameter ±0.15mm	B	6.35	7.92	8.70	11.05	12.65
Depth of body ±0.13mm	C	1.5	2.0	2.0	4.0	5.5
Recommended hole size +0.05 -0.00mm		4.25	5.40	6.40	8.75	10.50

Preferred Range

Thread (d)		M3	M4	M5	M6
Gauge Size	12	A2			
	14	A2	ST A2		
	16	A2	ST	ST	ST A2
	18	A2	ST A2	ST A2	ST A2
	20	A2	ST A2	ST A2	
	22	ST A2	ST A2	A2	
	24	ST A2	A2	A2	

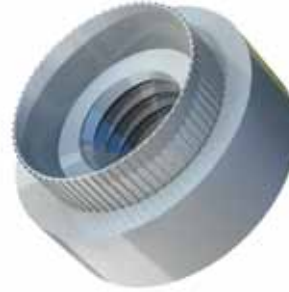
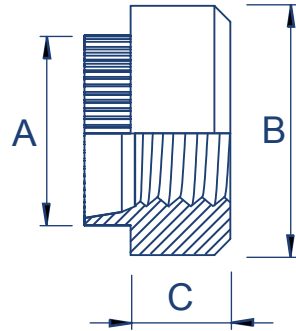
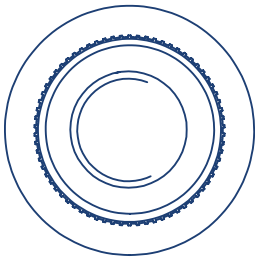
ST - Steel
A2 - 303 Stainless Steel

TR FASTENINGS

Euro Rivet Bush (ERB)



Steel/Zinc & Clear (CR3) | Steel/Self Finish (SF)



Metric Dimensions

Thread form		M3	M4	M5	M6	M8
Diameter of spigot +0.00 -0.13mm	A	5.85	6.90	8.30	9.60	13.05
Diameter of body ± 0.15 mm	B	7.92	9.52	11.10	12.70	15.87
Depth of body ± 0.13 mm	C	3.17	3.81	4.45	5.72	6.35
Recommended hole size +0.10 -0.0mm		5.90	6.95	8.35	9.65	13.10

Preferred Range

Thread (d)		M3	M4	M5	M6	M8
Sheet Thickness	0.9 - 1.0	ST	ST	ST	ST	
	1.1 - 1.3	ST	ST	ST	ST	
	1.4 - 1.6	ST	ST	ST	ST	ST
	2.0 - 2.2	ST	ST	ST	ST	ST
	2.3 - 2.5			ST	ST	ST
	2.9 - 3.1			ST		ST

ST - Steel

TR FASTENINGS

Contact Us



UK

t: 08454 811 800 f: 0870 458 7851
e-mail: uk@trfastenings.com

Ireland

t: +353 (0)22 22301 f: +353 (0)22 22056
e-mail: ireland@trfastenings.com

Netherlands

t: +31 (0)541 511515 f: +31 (0)541 517134
e-mail: netherlands@trfastenings.com

Norway

t: +47 67 06 70 00 f: +47 67 06 70 10
e-mail: norway@trfastenings.com

Sweden

t: +46 (0)8 578 44 900 f: +46 (0)8 578 44 950
e-mail: sweden@trfastenings.com

Hungary

t: +36 24 516 972 f: +36 24 516 961
e-mail: hungary@trfastenings.com

Poland

t: +48 (22) 402 36 14 f: +48 (22) 402 36 24
e-mail: poland@trfastenings.com

Singapore

t: +65 6759 6033 f: +65 6759 6022
e-mail: singapore@trfastenings.com

China

t: +86 21 5032 5696 f: +86 21 5032 5775
e-mail: china@trfastenings.com

Taiwan

t: +866 7 552 5577 f: +886 7 552 7033
e-mail: taiwan@trfastenings.com

Malaysia

t: +604 508 3931/2 f: +604 508 3942
e-mail: malaysia@trfastenings.com

India

t: +91 967707 1807 m: +65 9684 1763
e-mail: india@trfastenings.com

Thailand

t: +66 38491 430 f: +66 38491 430
e-mail: thailand@trfastenings.com

USA

t: +1 (800) 280 2181 f: +1 (281) 807 0620
e-mail: usa@trfastenings.com

Master Distributor Details

Info@trfastenings.com
sales@trfastenings.com
marketing@trfastenings.com
www.trfastenings.com